

PHYS 315 F 2015 Source Transformations Huck

From Introductory Circuits for Electrical & Computer Engineers

James W. Nilsson & Susan Riedel, Prentice Hall, 2002

- P** 2.23. (a) Use source transformations to find v_o in the circuit in Fig. P2.23.
 (b) Find the power developed by the 300 V source.
 (c) Find the power developed by the 10 A current source.
 (d) Verify that the total power developed equals the total power dissipated.

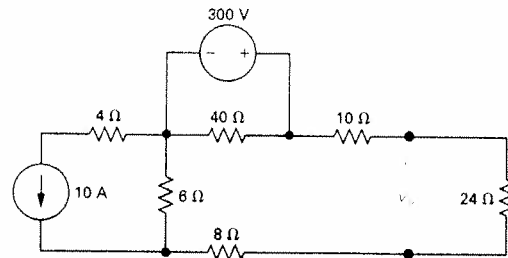


Figure P2.23

- P** 2.24. Use a series of source transformations to find i_o in the circuit in Fig. P2.24.

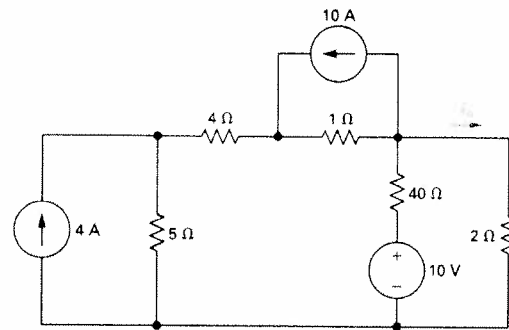


Figure P2.24

- P** 2.25. Determine i_o and v_o in the circuit shown in Fig. P2.25 when R_o is 0, 2, 6, 10, 15, 20, 30, 40, 50, and 70 Ω .

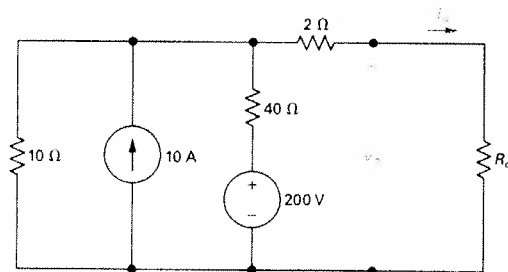


Figure P2.25