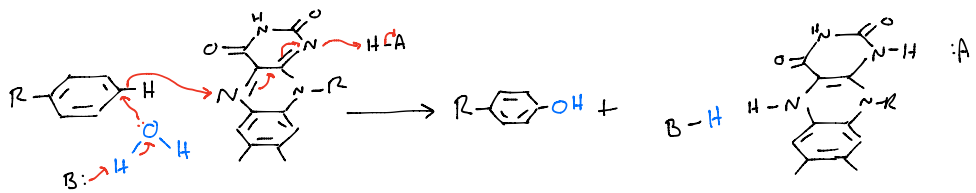
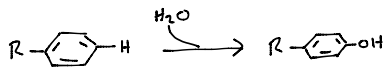
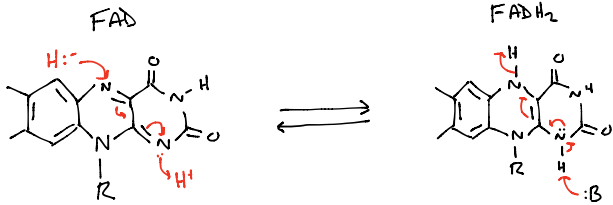
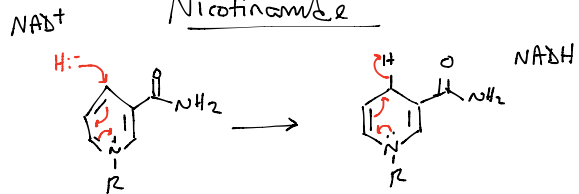


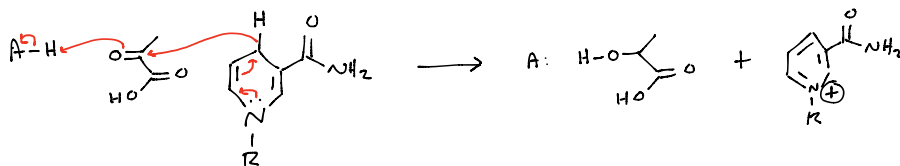
# Flavin

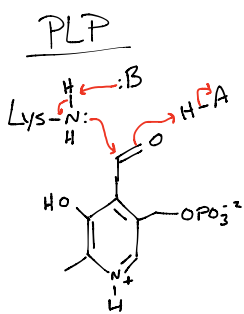


# Nicotinamide

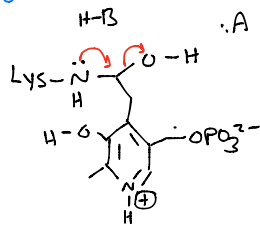


## Pyruvate $\rightarrow$ Lactic Acid

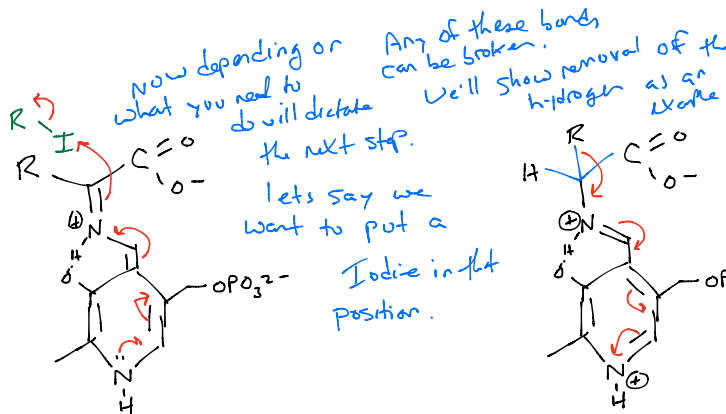
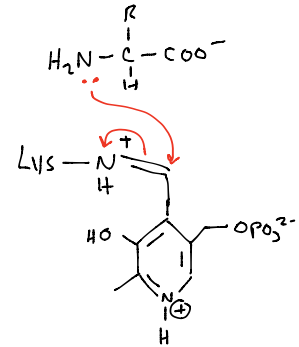
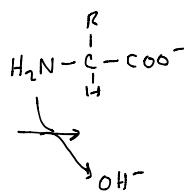




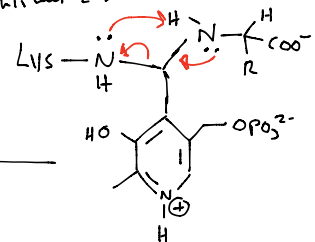
PLP covalently bound to Lys @ active site



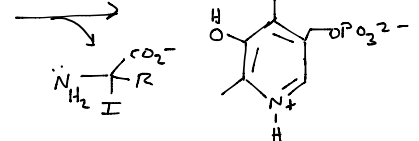
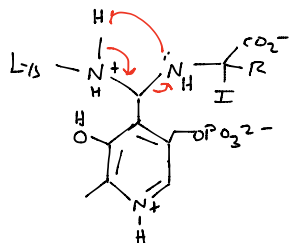
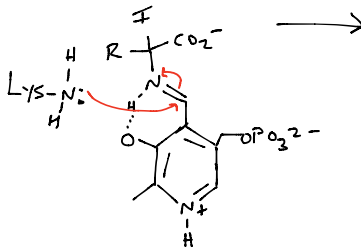
Substrate ENTERS




IN the handout this was 2 steps.



Now the Lys displaces the amino acid



In summary, the really important parts are forming the schiff base between PLP and the enzyme, displacement of that with a schiff base to the amino acid substrate. Once that happens, only one bond can be cleaved. Push electrons to the  to break the bond. Finally you need to regenerate the PLP-Lys schiff base.